

TO BRING GOD'S GRACE AND LOVE TO EACH OTHER  
AND TO THE WORLD

# THE LIGHT



Pastor's Notes

August 2022



Get ready for the 2022 Backpack Event!

We will be giving away backpacks full of school supplies and a hot dog dinner all for FREE!

The event will take place on Friday, August 19th from 5:00 pm to 7:00 pm.

Mark your calendars! We hope to see you there !

CJ Clark, the Director of Living Water Ministry and Stony Lake Camp of our Synod, will be our speaker on August 7. CJ will tell us about two new directions for our camp: one is its initiative to become a Reconciling In Christ Ministry, and the second is to raise a challenge fund to make camp cost free.

Pastor Steve Samuelson will lead worship August 14 in Pastor Ogden's absence. Pastor Ogden will be back from Ohio in time the back pack event.

*Pastor Ogden*

## Lebanon Evangelical Lutheran Church

*A Congregation of the North/West Lower  
Michigan Synod, of the ELCA  
Craig Satterlee, Bishop  
Elizabeth Eaton, Presiding Bishop*

1101 S. Mears Avenue  
Whitehall, MI 49461  
(231) 893-5745

Rev. Douglas M. Ogden

Sunday Morning Worship  
10:15 am in person  
YouTube Worship on the Web

### Office Hours

Please contact the church office for  
current hours

Newsletter Editor &  
Bulletin Announcements  
Margaret Everling

### Church Council

Meg Eaton	Cheri Crouch
Brian Jaekel	Scott Keller
Alan Hinks	Laura Hollister
Sarah Schmalz	Wietse Schaafsma

**"We are baptized members of God's  
Church, forgiven and set free by grace  
through faith.**

[www.lebanonlutheranchurch.com](http://www.lebanonlutheranchurch.com)

Facebook: Lebanon Lutheran Church  
(ELCA)

Instagram—Twitter : #llcsignsofgrace

**August 2022  
Fund of the Month  
Camp Endowment**



The next Scout Can & Bottle Drive will be Saturday, September 10th. More details to come!

**Websites of Interest**

[www.lebanonlutheranchurch.com](http://www.lebanonlutheranchurch.com)

[www.mittensynod.org](http://www.mittensynod.org)

[www.elca.org](http://www.elca.org)

[www.whitelakescouting.com](http://www.whitelakescouting.com)

[www.whitelakechorale.com](http://www.whitelakechorale.com)

[www.hopescarves.org](http://www.hopescarves.org)

[LivingLutheran.org](http://LivingLutheran.org)

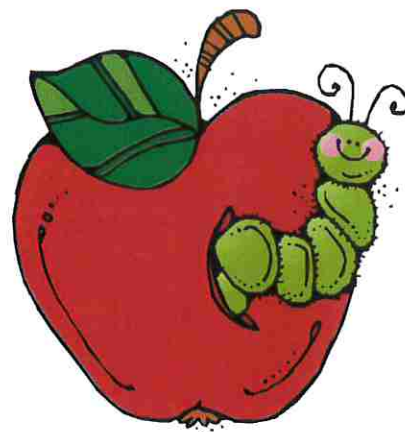
[www.samaritas.org](http://www.samaritas.org)

**Suicide Hotline** [1-800-273TALK.org](http://1-800-273TALK.org)  
[www.co.muskegon.mi.us/cmh/suicide\\_prevention](http://www.co.muskegon.mi.us/cmh/suicide_prevention)

**Every Woman's Place** 231-722-3333 or  
[www.everywomansplace.org](http://www.everywomansplace.org)

**The Trevor Project** 1-866-488-7386

The Trevor Project is the world's largest suicide prevention and crisis intervention organization for LGBTQ (lesbian, gay, bisexual, transgender, queer, and questioning) young people.





**North/West Lower  
Michigan Synod**

**2900 N. Waverly Rd.  
Lansing, MI 48906**

**517-321-5066  
[mittensynod.org](http://mittensynod.org)**

**In this Issue:**

Church 101

Take Time to Think About Mission

Upcoming Events

Congregations in Transition

**Church 101**

Two other hymns have become precious to me since I became a bishop: "The Church's One Foundation" (listen here: <https://bit.ly/3o3P1a9>) and "Built on a Rock" (listen here: <https://bit.ly/3uOOE7k>). The church's one and only foundation is Jesus Christ our Lord. The church is Christ's creation by water and the word. On this rock, the church will stand even when steeples fall, congregations close, synods struggle, and denominations are divided. As we prepare for the Churchwide Assembly in August, and respond to conflicts occurring in our congregations, a reminder of the way we, as the ELCA, have determined to be church seems in order.

First, as a Lutheran tradition, we are a confessional church. If you have not done so, or done so in a while, I encourage you to read the Augsburg Confession (available here: <https://bookofconcord.org/augsburg-confession/>). We believe that we are justified, made right with God, or saved by God's grace through faith, for Christ's sake, apart from anything we do or fail to do. We also believe that God instituted the preaching of the Word and the administration of the Sacraments to obtain faith when the gospel of Jesus Christ is proclaimed. So, preaching and teaching that we have to do something or decide something to be saved, teaching and preaching that we can lose God's love, or turning the pulpit into an occasion to talk about something other than Jesus, are inconsistent with the Lutheran confessions. Of course, preaching about Jesus empowers us to preach about everything else, the question is how.

Second, we are a constitutional church. Bishops, pastors, and deacons promise to carry out their ministries in harmony with the constitutions of the Evangelical Lutheran Church in America, and congregational leaders and congregations themselves are expected to do the same. This means, for example, that I cannot do whatever I want or whatever you want with the stroke of my pen, and neither can your pastor or Presiding Bishop Eaton. So, it is inappropriate to yield to either what we might think are direct interventions of the Holy Spirit or pressure from people who consider themselves special. Since we are a constitutional church, it is important that congregations keep their constitutions up-to-date and in order. When was the last time you took a look at yours?

Third, we are in interdependent church. We do not function hierarchically. We have three "expressions" of the church - congregation, synod, and churchwide organization. One expression really cannot tell another what to do or not to do. Constitutionally, we agree that there are things we will do or not do. So, a synod cannot unilaterally decide to close a congregation and the churchwide organization cannot order a synod to do something that a member of a congregation wants. As a rule, the people closest to a decision make the decision.

Finally, we are a democratic church, which is why we have congregational meetings, synod assemblies, and churchwide assemblies, and why we elect councils at all three levels to lead between these assemblies. The assemblies, which are more than annual meetings but are, in effect, the highest legislative authority in our church, make decisions that congregations, synods, and the churchwide organization implement. So, if the churchwide assembly in Columbus in August makes a decision you don't agree with, neither your pastor, Bishop Eaton, nor I can undo it.

*Continued on Page 4*

### **DONATE RIGHT FROM YOUR SMARTPHONE**

Giving through our Vanco Mobile app is an easy and convenient way to donate to our church. It only takes a moment to set up and account:

1. Download the free Vanco Mobile app from the App store or Google Play.
2. Find our Church by searching for our Church name:  
Lebanon Lutheran Church
3. Donate: to the General Fund

*Thank you for your generosity*

*This is the new version of the GivePlus app, and must be downloaded again from your App Store.*

Bishop (continued from page 3)

When it works well, being a confessional, constitutional, interdependent, and democratic church works really well. And when it doesn't, things get messy and even ugly. That's when we need to remember that the church's one foundation is Jesus Christ our Lord and, built on this rock, Christ's Church will stand, even when steeples are falling.

Peace be with you!

The Rev. Craig Alan Satterlee, Ph.D., Bishop

# Prayer Concerns

**It is an important part of our ministry to be praying constantly for one another.** We add names to the prayer list with consent in order to maintain privacy and confidentiality. This month in your prayers, please remember:



Prayers for those who are homebound:

Our Minister

**Helen Bartlett**, at home

**Mary Bernhardt**, at Robinswood Assisted Living #115 (Kay Snell)

**Marlene Holmstrom**, at home

**Elaine Liska**, at White Lake Assisted Living - Whitehall

**Ruth Nurmi**, with health concerns

**Nancy Peterson**, at Heartland , Room #405 B

**Bernie Weidner**, at Sanctuary of the Oaks. (Danielle Jacobs)

**Marty Windbacher**, at home

Special Prayer Concerns:

**Cindy Albert**, with health concerns

**Tracey Allen**, (Roger Silk's cousin) diagnosed with terminal brain cancer

**Jennifer Snowden Bossi**, 34, (Ardy Bulthouse's granddaughter) diagnosed with a rare form of cancer.

**Lucas Carlson**, (Terry and Mary Beekmans grandson) for new treatment.

**Diane**, (friend of Cheri Crouch) diagnosed with cancer.

**Cora Hendrick**, (Curt Crouch's mother) diagnosed with cancer

**Terri Hissong**, (Margaret Everling's sister) health concerns

**Donna Jacobs**, (Don Jacobs mother) with kidney and heart issues

**Lauren Kerkstra**, (Darrel and Jeanette Otto's granddaughter), recovering slowly, able to walk and take commands. Remains non-verbal .

**Donna Knoth**, with heart issues.

**Jeff Knoth**, recently diagnosed with cancer

**Amy Jean Knorr**, ( Brian Holmblades aunt in Tucson) turned 105 years old on November 28.

**Mary**, (Meg Eatons mother) with health concerns.

**Dwight Mead** (Paula Moreau's brother-in-law), non-hodgkin lymphoma mantel type (stage four).

**Monica Ogden**, recuperating at home from knee replacement

**Shirley**, (friend of Barb Aardema) had stem cell replacement in early May and is working through the healing process

**Tammy**, (daughter of Wietse and Melanie Schaafsma) with brain cancer & diabetic. At home.

**Jen**, (Tammy's sister ) suffered aneurysm, at home.

**Bob Palmatter** ( Cindy Albert's brother), with breathing difficulties.

**Jon Stark** (Erin Lewallen's brother-in-law), non-Hodgkins Lymphoma.

**Jan Troeger**, (Cindy Albert's sister), suffered a stroke.

**Darlene Willbrandt**, recuperating from tick-born disease.



## Worship Notes

**Sunday, August 7 - Pentecost 9**

**Color: Green**

**Worship - 10:15am**

**Musician: Aeden McCauley**

**Readings**

**Today we pray for:  
Barb Smith**

**CJ Clark, guest speaker  
Living Waters Ministry**

**Genesis 15:1-6  
Psalm 33:12-22  
Hebrews 11:1-3, 8-16  
Luke 12:32-40**

**Prayer of the Day**

Almighty God, you sent your Holy Spirit to be the life and light of your church. Open our hearts to the riches of your grace, that we may be ready to receive you wherever you appear, through Jesus Christ, our Savior and Lord. **Amen.**

---

**Sunday, August 14 - Pentecost 10**

**Color: Green**

**Worship - 10:15am**

**Musician: Aeden McCauley**

**Readings**

**Today we pray for:  
Bernice Schuitema**

**Jeremiah 23:23-29  
Psalm 82  
Hebrews 11:29-12:2  
Luke 12:49-56**

**Prayer of the Day**

O God, judge eternal, you love justice and hate oppression, and you call us to share your zeal for truth. Give us courage to take our stand with all victims of bloodshed and greed, and, following your servants and prophets, to look to the pioneer and perfecter of our faith, your Son, Jesus Christ, our Savior and Lord. **Amen.**





**Sunday, August 21 - Pentecost 11**  
**Worship - 10:15am**

**Color: Green**

Readings

**Musician: Aeden McCauley**    **Isaiah 58:9b-14**  
**Psalm 103:1-8**  
**Hebrews 12:18-29**  
**Luke 13:10-17**

**Today we pray for:**  
**Nancy Peterson**

Prayer of the Day

O God, mighty and immortal, you know that as fragile creatures surrounded by great dangers, we cannot by ourselves stand upright. Give us strength of mind and body, so that even when we suffer because of human sin, we may rise victorious through your Son, Jesus Christ, our Savior and Lord. **Amen.**

---

**Sunday, August 28 - Pentecost 12**  
**Worship - 10:15 am**

**Color: Green**

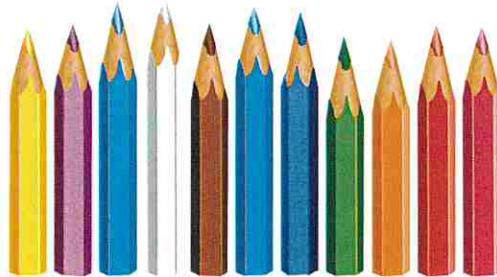
Readings

**Musician: Aeden McCauley**    **Proverbs 25:6-7**  
**Psalm 112**  
**Hebrews 13:1-8, 15-16**  
**Luke 14:1, 7-14**

**Today we pray for:**  
**Cindy Albert**

Prayer of the Day

O God, you resist those who are proud and give grace to those who are humble. Give us the humility of your Son, that we may embody the generosity of Jesus Christ, our Savior and Lord. **Amen.**



# August



8/2 Jackie Martin	8/21 Ethan Bowen
8/4 Kay Snell	8/22 Brent Will
8/14 Lori Will	8/23 Jeffrey Hendrixon
8/15 Linda Blakemore	8/24 Sandra Kolb
8/15 Rob Rop	8/25 Logan Montgomery
8/16 Lisa Clark	8/27 Melissa Herring Kroll
8/16 Doug Roesler	8/27 Rachel Wahr Bartlett
8/16 Rikki Lee Will	8/28 Laurel Helveston Wolf
8/16 Jon Blyth	8/28 Nichole Page Farrar
8/19 Jessica Gelvin	8/31 Donna Stacy
8/20 Nicholas Will	
8/20 Jessica Knoth	
8/21 Cindy Albert	



8/3/74	Frank & Rita Lundell
8/7/71	Andy & Wendy Shalifoe
8/13/93	Randy & Cathy Nurmi
8/13/11	Seth & Megan Ahrenholz
8/21/82	Tony & Patty DeNicolo
8/22/64	Tom & Sheila Fretty
8/31/68	Harry & Yolanta Swiatek



Get ready for the 2022 Backpack Event!

We will be giving away backpacks full of school supplies and a hot dog dinner all for FREE!

The event will take place on Friday, August 19th from 5:00 pm to 7:00 pm.

Mark your calendars! We hope to see you there !



## Baptism Anniversaries



8/1 Alaina Leo  
8/2 Megan Crouch  
8/4 Thomas Swiatek  
8/7 Jodi Nichols

8/8 Sue Roesler  
8/9 Deb Statz Peabody  
8/14 Gabriel DeMumbrum

8/18 Joel Fretty  
8/28 Jenny Fretty  
8/29 Ronald Anderson  
8/29 Bill Cloutier

Celebrate your baptism anniversary with a candle a meal or this prayer:

“Stir up within me the gift of your Holy Spirit: the spirit of wisdom and understanding, the spirit of counsel and might, the spirit of knowledge and joy, on this day when I give thanks for my baptism in to Christ.”

Lebanon's 150th Anniversary Picnic



August 28, 2022



Hollister's Water's Edge Lodge

6195 Murray Road ( next to White River Light Station)

12:00 noon

1:00 pm potluck meal begins

Please bring a dish to pass. Lemonade and name tags supplied

Available swimming, small boats, yard games, walks on pier or Lake Michigan beach.

Dessert tasting contest. Campfire near the White Lake beach

\*\*please bring your own table service and lawn chair/blanket. Some picnic tables and lawn chairs, grills, stoves, and refrigerators, and rest rooms available on site.



## HOW TO DIRECT THRIVENT CHOICE DOLLARS®

### Online

1. Visit [Thrivent.com/thriventchoice](http://Thrivent.com/thriventchoice).
2. In the "GET STARTED" section on the right, click **Direct Thrivent Choice Dollars®**.
3. Log in by entering your user ID and password. (If you haven't yet registered on Thrivent.com, click "Register for account access.")
4. Choose the organization to which you want to direct Choice Dollars:
  - a. To direct to a previous organization:
    - Click "Direct Now" next to the organization's name, or
    - Click on the "View activity history" link, scroll down and click on the **name of the desired organization**.
  - b. To direct to a new organization, **enter keyword(s)** like organization name, ZIP code, cause, etc. Click "Search."
5. Choose "Direct All" or enter a specific number and click "Direct Now." Follow the prompts on the confirmation page to direct Choice Dollars.

### By phone

1. Call **800-847-4836** and when prompted, say "Thrivent Choice."
2. Press **1** to direct Choice Dollars or **2** to hear Thrivent Choice Dollars® program Terms and Conditions. (If prompted, say or enter your phone number and date of birth.)
3. A representative will work with you to direct Choice Dollars.

**You have the power to recommend where Thrivent gives back!**

### WANT TO MAKE AN EVEN BIGGER IMPACT?

**Make a personal donation.**



The Thrivent Choice® charitable grant program engages Thrivent members and Thrivent Member Networks in providing grants that support charitable activities, furthering Thrivent's mission and its purposes under state law. All grant decisions, including grant recipients and amounts, are made at the sole discretion of Thrivent. Directing Choice Dollars® is subject to the program's Terms and Conditions available at [Thrivent.com/thriventchoice](http://Thrivent.com/thriventchoice).

26087 R12-18

# Market Volatility

What goes down historically has come up after market lows

Performance after S&P 500® Index corrections

While you may be tempted to pull money out of the stock market to avoid corrections and bear markets—like what we saw in early 2020—timing the market is notoriously difficult. Not only do you need to reduce your exposure to equities at just the right time. You'll need to re-enter the market at precisely the right time as well.

History has shown that you'll typically see a sharp rebound in equity markets after periods of decline. Following the 10 bear markets (declines of 20% or more) since 1950, the first three months after the bottom saw returns bounce back 20.9%, on average, while the first full year climbed, on average, 43.4%. Missing out on these recovery periods can sometimes be as painful as holding through the decline that preceded it.

Talk with your financial professional about building, balancing and diversifying your portfolio with Thrivent mutual funds. You can also learn about your options by visiting [thriventfunds.com](http://thriventfunds.com) or by calling 800-847-4836.

Bear market low date	Decline	First 3 months	Next 3 months	Next 3 months	Next 3 months	1 year total
March 23, 2020	-33.9%	40.0%	3.4%	14.0%	6.0%	74.6%
March 9, 2009	-56.8%	39.3%	9.6%	6.1%	4.1%	68.6%
Oct. 9, 2002	-49.1%	19.4%	-6.6%	15.7%	3.6%	33.7%
Dec. 4, 1987	-33.5%	19.4%	-0.3%	-0.7%	2.8%	21.4%
Aug. 12, 1982	-27.1%	36.2%	5.8%	11.2%	-1.3%	58.3%
Oct. 3, 1974	-48.2%	13.5%	15.3%	15.8%	-8.9%	38.0%
May 26, 1970	-36.1%	17.2%	5.8%	13.9%	1.7%	43.7%
Oct. 7, 1966	-22.2%	12.3%	8.7%	2.6%	6.1%	32.9%
June 27, 1962	-27.6%	6.0%	12.8%	6.0%	3.6%	31.3%
Oct. 22, 1957	-21.5%	5.7%	3.9%	8.4%	10.0%	31.0%
<b>Average</b>	<b>-35.6%</b>	<b>20.9%</b>	<b>5.8%</b>	<b>9.3%</b>	<b>2.8%</b>	<b>43.4%</b>

Sources: Standard & Poor's; Thrivent.

Contact your Whitehall Thrivent Financial Advisors: Marci Bentz and Tony De Nicolò by calling 231-894-8886, texting 231-760-8246 or email [whitehalloffice@thrivent.com](mailto:whitehalloffice@thrivent.com). The S&P 500 Index is a market-cap weighted index that represents the average performance of a group of 500 large-capitalization stocks. Results shown assume reinvestment of dividends or interest. Any indexes shown are unmanaged and do not reflect the typical costs of investing. Investors cannot invest directly in an index. Index performance is not indicative of the performance of any Thrivent product.

Past Performance may not be indicative of future results. The distributor for Thrivent Mutual Funds is Thrivent Distributors, LLC, a registered broker-dealer and member FINRA/SIPC, and a subsidiary of Thrivent, the marketing name for Thrivent Financial for Lutherans, 2021 Thrivent 33094F R8-21



## Lebanon Lutheran Church

1101 South Mears Avenue  
Whitehall, MI 49461

Living in God's Amazing Grace

*The Light* is published monthly by Lebanon Lutheran Church, 1101 S. Mears Avenue, Whitehall, MI 49461. Submissions are accepted through the 15th of each month. Submissions MUST include your name and a way to contact you in case of questions.

2 ways to submit your information:

- yellow folder in Margaret's office  
(*better*)
- [office@lebanonlutheranchurch.com](mailto:office@lebanonlutheranchurch.com)  
(*best*)



Backpack Giveaway  
August 19, 2022  
5:00 pm to 7:00 pm

Details inside